

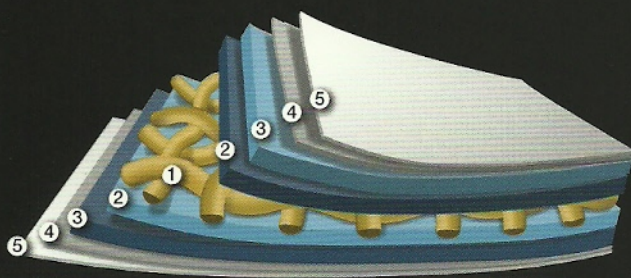
TENTS AND TEXTILE ARCHITECTURE

TYPE 4 • T4107

ARCO

SICEN

TYPE 4 • T4107 • MIN. 1000 LM



SIOEN TEXTILE ARCHITECTURE MEMBRANES "THE 9-LAYER FABRIC"

- 1 Pre treated base fabric PES high tenacity yarn – extra strong, stabilised and flattened
- 2 First coating layer with extra adhesion characteristics – adhesion
- 3 Second coating layer highly pigmented with a UV stable pigmentation
- 4 Siofluor lacquering layer – extra UV and weather resistance
- 5 Siofluor lacquering layer – extra UV and weather resistance

LOW WICK

All of Sioen's T-qualities are produced with fabrics containing ultra low-wicking high tenacity polyester yarns. In a normal polyester yarn, water (containing dirt and fungus) can be taken up by capillary action. When this phenomenon occurs, it will lead to dark marks over the tent structure, which cannot be removed.

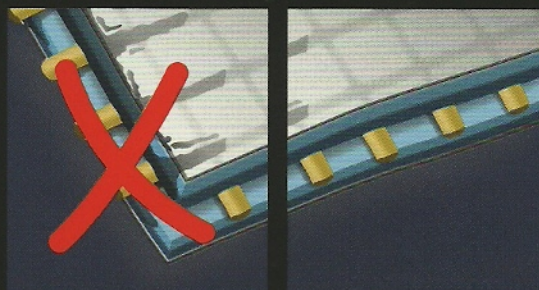


LOW WICK



WICK

Sioen's low-wicking yarns have a special treatment that reduces staining to practically zero. Evidently, this treatment highly extends the life span of the structure and favors the aesthetic aspect of it.



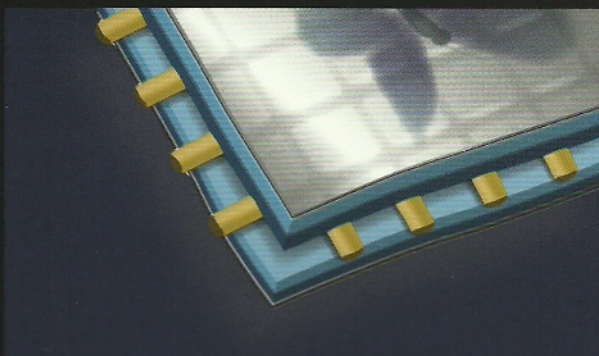
EXTRA UV AND THERMAL STABILITY

To guarantee a maximum life span of the PVC coated fabric, Sioen managed to optimize the overall composition in such a way that it shows excellent UV, thermal and biochemical resistance. The PVC and the pigments in Sioen's T-qualities are selected for their highly stable nature on their own. In order to achieve the highest possible ageing resistance, our labs have managed to increase considerably the life span of the coating even further by incorporating the best UV-, bacterial and thermal stabilisers. In this way, the risk of undesired effects like discoloration is reduced to an absolute minimum. Excellent stability is not a challenge, but a standard.



LACQUERING

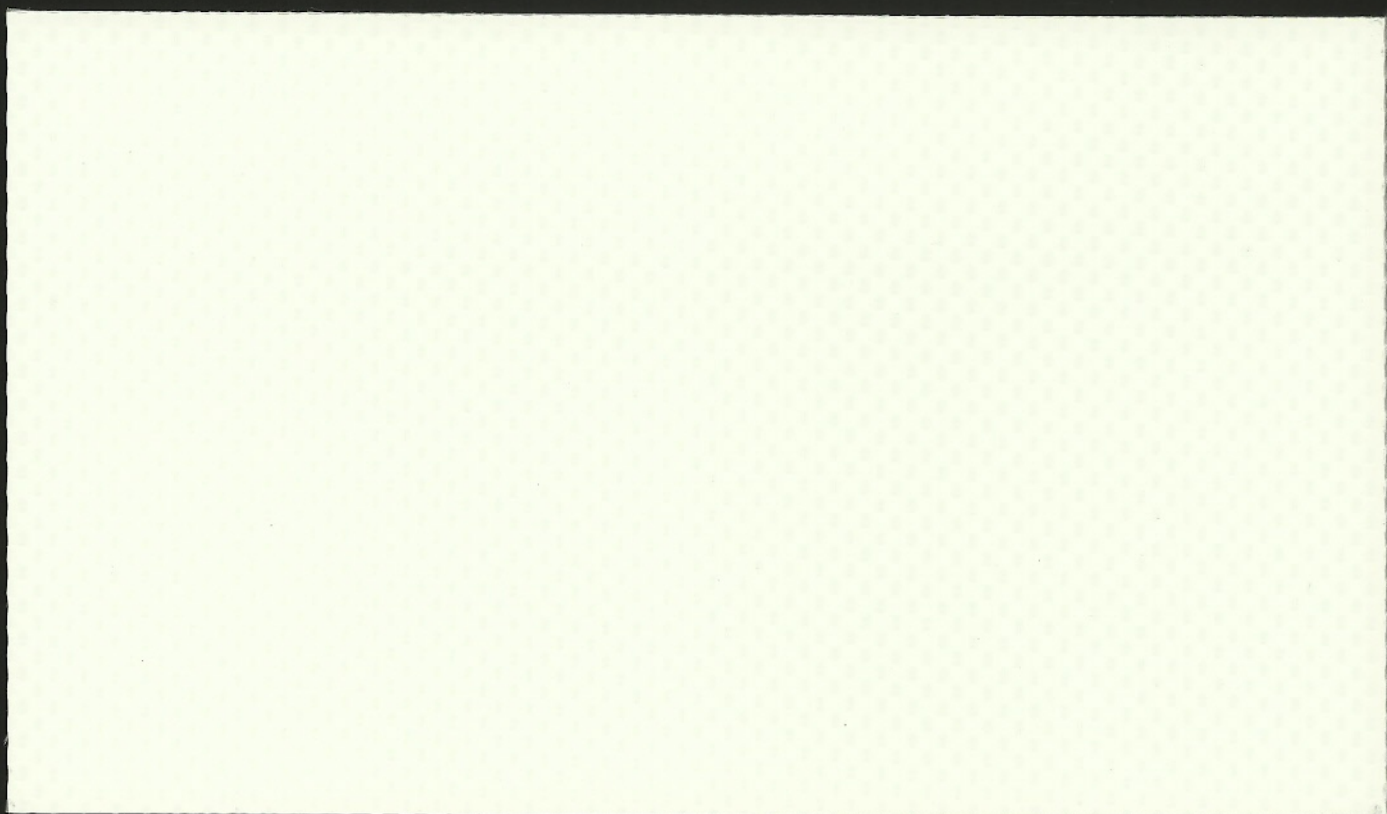
Lacquer treatment is of key significance in textile architecture. The type, quality and amount of numerous lacquer components



have been elaborately investigated in our R&D labs. Sioen offers two types of double lacquer treatment. Each of these lacquers have been optimally formulated with top class ingredients that give important features like extra UV, chemical and weather resistance, dirt repellence, smoothness and a brilliant finish.

- a) **Siofluor**: The standard double acrylic/PVDF lacquering, with excellent dirt repellence and improved chemical and radiation protection.
- b) **Fluomax**: A double fluorinated PVDF lacquering, which gives the highest possible ageing resistance (OPTION).

TYPE 4 • T4107 • MIN. 1000 LM



9909 – white/white – 250 cm

SIOEN

ABOEN

TYPE 4 • T4107 • MIN. 1000 LM

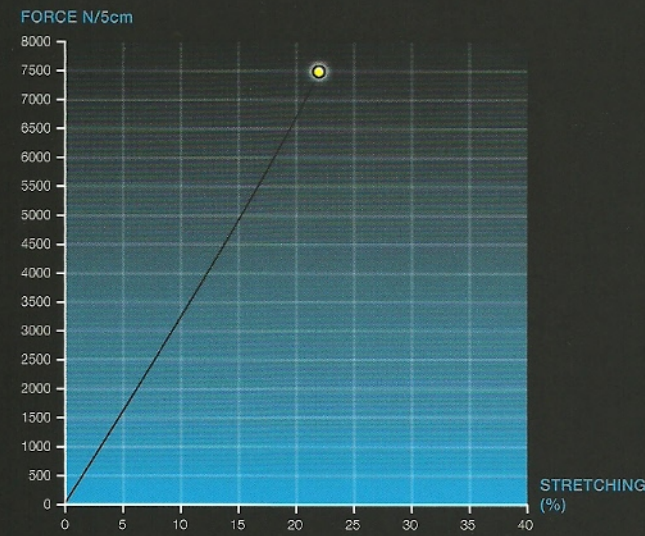
fabric/weefsel/tissu Gewebe/tejido		100% PES 1670 dtex	
weight/gewicht/poids Gewicht/peso total		1350 g/m2	
vernis/lacquering/ Lackierung/lacado		2/2	
aspect/uitzicht/aspect Aussicht/aspecto		Glossy	
breaking strength treksterkte résistance rupture Höchstzugkraft resistencia a la ruptura	chaîne/ketting/warp Kette/urdimbre weft/inslag/trame Schuß/trama	7500 N/5cm 6500 N/5cm	
tear strength scheurweerstand résistance à la déchirure Weiterreißfestigkeit resistencia a la rasgadura	chaîne/ketting/warp Kette/urdimbre weft/inslag/trame Schuß/trama	1000 N 1000 N	
adhesion/adhérence/hechting Haftung/adherencia		120 N/5cm	
temperature resistance temperatuurbestendigheid tenue à la température Temperaturbeständigkeit resistencia a la temperatura		-30 °C/+70°C	
light fastness lichtechtheid tenue à la lumière Lichtechtheit resistencia a la luz	(uitgezonderd wit en (semi-) transparant) (excepté en blanc et (semi-) transparent) (except white and (half-) transparent) (außer Weiß und (Semi-)transparent) (excepto blanco/(Semi-)transparente)	7-8	
Luminous characteristics according to NBN EN 410: • light transmission/lichttransmissie/transmission de la lumière/Licht Transmission/transmisión de la luz • light reflection/lichtreflectie/réflexion de la lumière/Licht Reflexion/ reflexión de la luz • UV transmission/UV transmissie/transmission de UV/UV Transmission/ transmisión de UV		3% 92% 0%	
Luminous characteristics according to NBN EN 410: • solar transmission/zonnetransmissie/transmission solaire/Sonne Transmission/transmisión solar • solar reflection/zonreflectie/réflexion solaire/solar reflection/Sonne Reflexion/reflexión solar • solar absorption/zonneabsorptie/absorption solaire/Sonne Absorption/absorción solar		3,5% 82,5% 14%	
fire behaviour/brandgedrag/reaction au feu Brennverhalten/comportamiento al fuego		B1	DIN 4102

Al onze technische gegevens zijn indicatief | Toutes nos caractéristiques techniques sont indicatives | All our technical characteristics are indicative

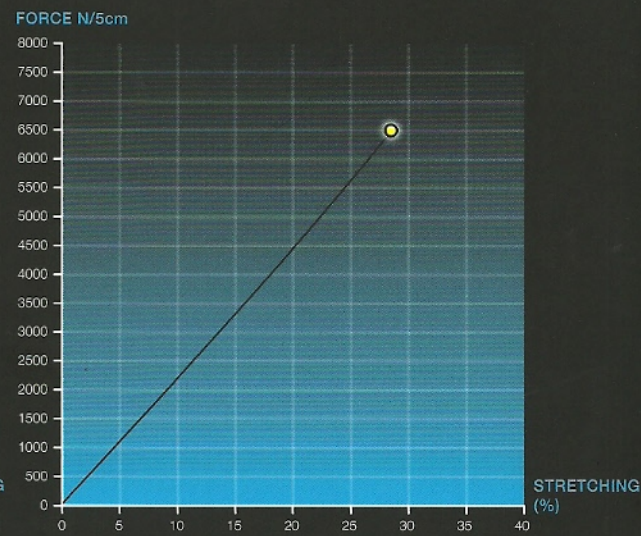
Alle technischen Daten sind indikativ | Las características técnicas están indicativas

TYPE 4 • T4107 • MIN. 1000 LM

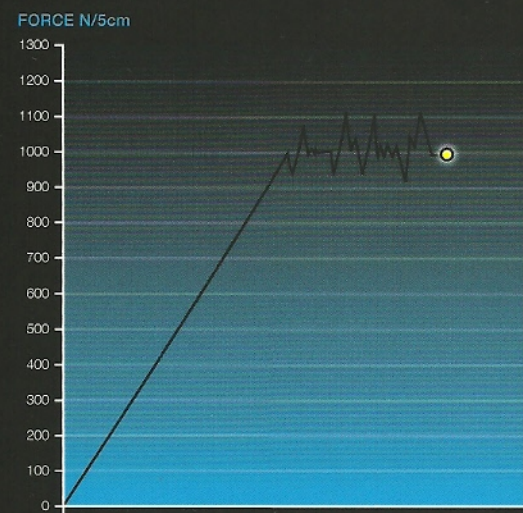
BREAKING STRENGTH WARP



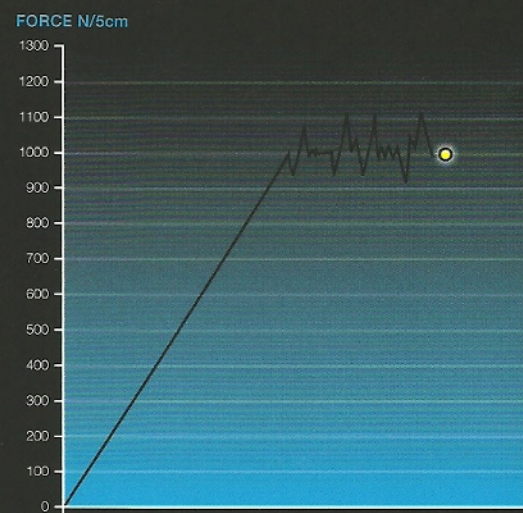
BREAKING STRENGTH WEFT



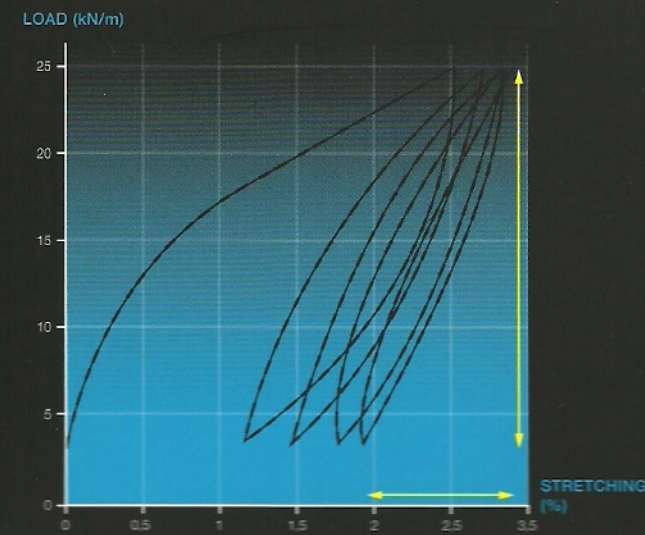
TEAR STRENGTH WARP



TEAR STRENGTH WEFT



BIAXIAL BEHAVIOUR WARP



BIAXIAL BEHAVIOUR WEFT

