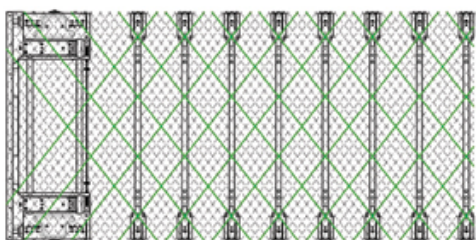


HOW TO INSTALL A **CARAPAX**[®] ROOF CURTAIN ON A TRAILER ROOF

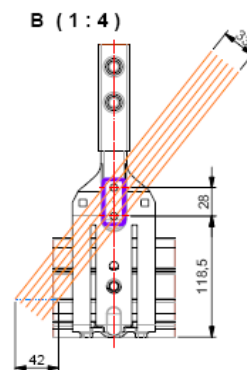
This installation instruction shows the installation of a **CARAPAX**[®] roof curtain on a Versus-Omega sliding roof with folding plates of 600 mm. A similar installation procedure will also be applicable for other roof brands.

1. Defining the right angle

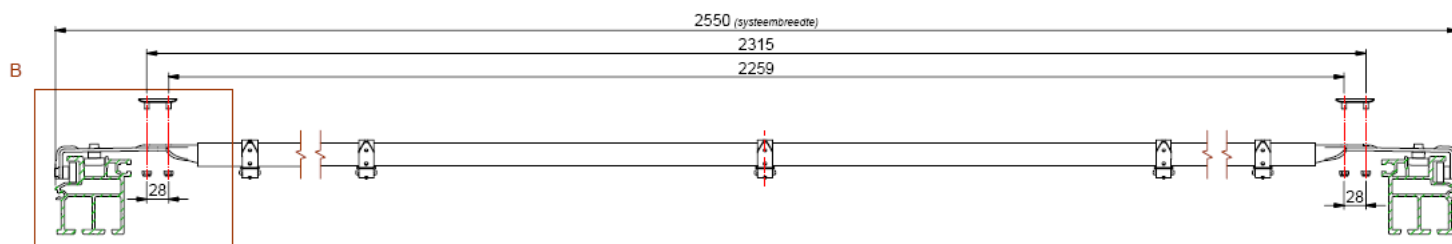


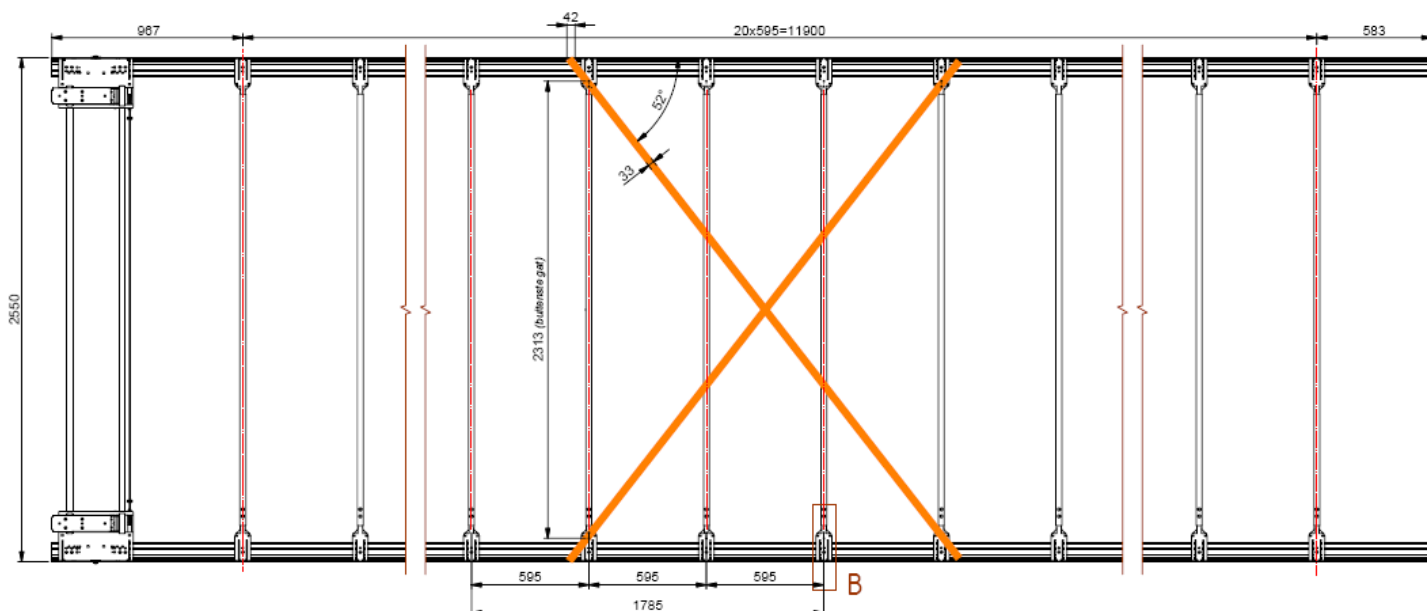
The **CARAPAX**[®] roof curtain is a PVC roof curtain with an aramid (Kevlar[®] or Twaron[®]) reinforcement construction welded against it. The aramid filament construction is build following a predefined angle.

To reinforce the trailer roof, the aramid filaments must be attached to every roofstick at both sides of the roof. In the whole construction, it is very important that the same filaments attached to the first roofstick at the left side are also attached to the fourth roofstick at the other side. This will allow the aramid filaments to hold the roof.



To get the maximum performance out of the **CARAPAX**[®] roof curtain, it is very important to define the right angle prior to ordering a **CARAPAX**[®] roof curtain.





To define the right angle, you make the following calculation :
ATAN (width on roofstick / 3 x roofstick spacing) = angle

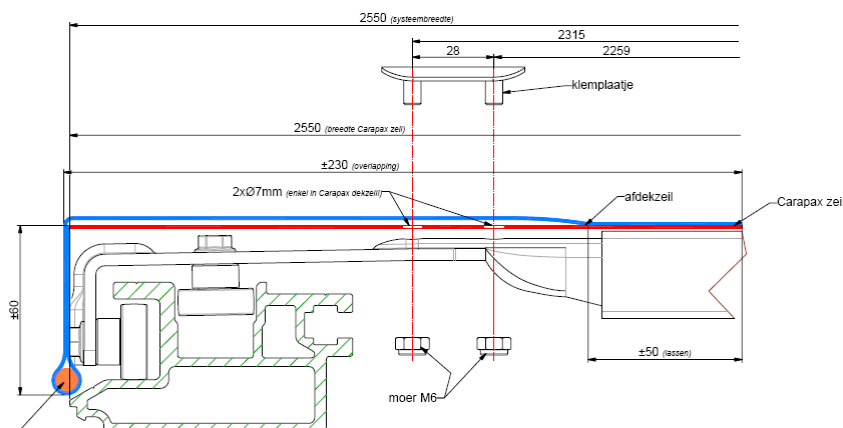
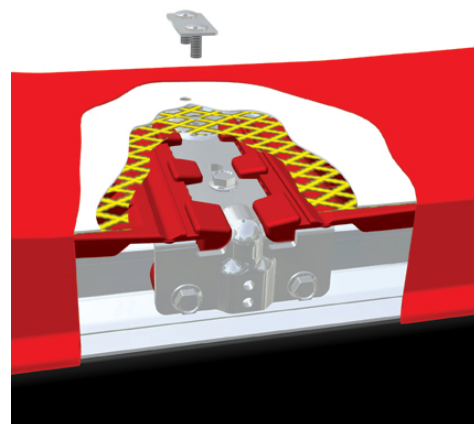
For the above shown Versus-Omega roof, the calculation gives:
ATAN (2285 mm / (3 x 595 mm)) = 52°

2. Preparing the trailer roof and CARAPAX® roof curtain

Because the aramid filaments have to be attached to every roofstick, the roofsticks must have pre-drilled holes, so that the **CARAPAX®** roof curtain can be attached to it using a curtain clamp.

When the **CARAPAX®** roof curtain is being prepared, the holes must also be pre-drilled in the curtain as defined by the trailer roof construction. This will speed up the installation of the **CARAPAX®** roof curtain on the trailer roof.

A close-up of the Versus-Omega roof below shows how the **CARAPAX®** roof curtain is attached to the roofstick.



3. Installing the CARAPAX® roof curtain on a trailer roof

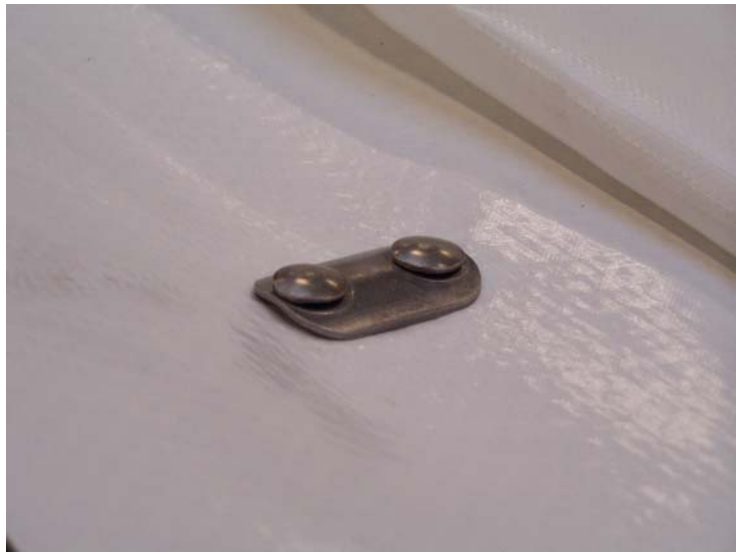
First of all, the **CARAPAX®** roof curtain is unrolled on the roof structure, with the side flaps lying towards the center of the roof.



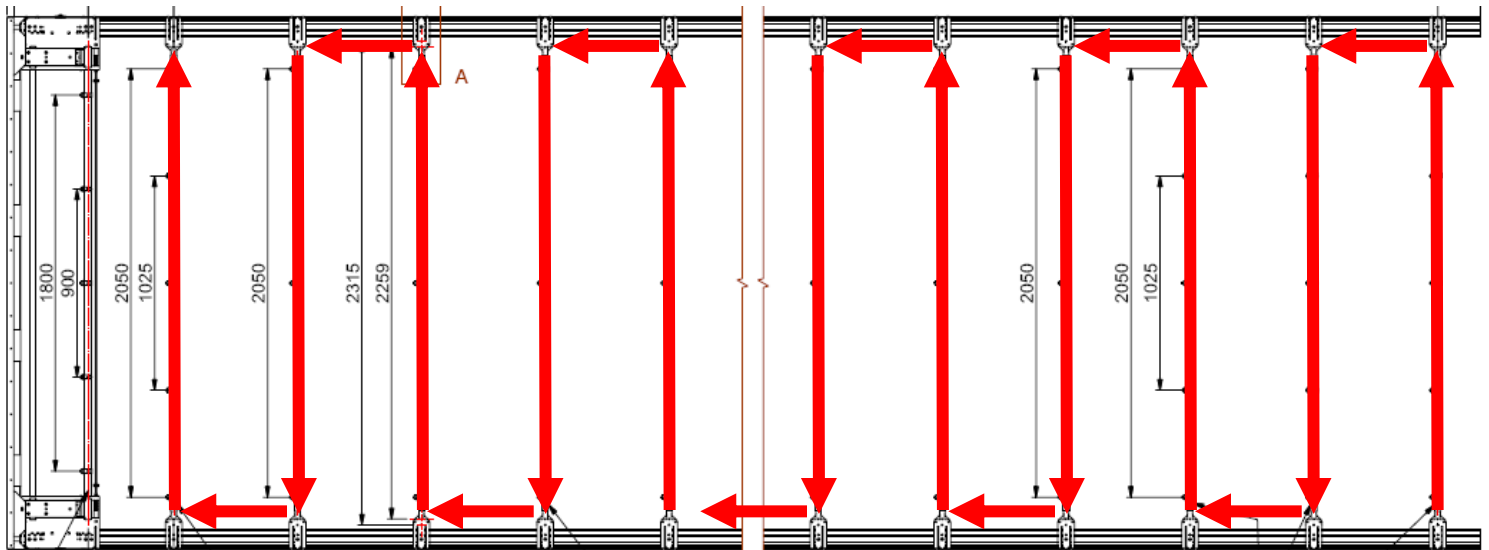
It is advised to start fixing the **CARAPAX®** roof curtain from the front side of the roof. The roof curtain must be fixed on the first roofstick at both sides with the clamp.



The curtain is fixed temporarily by screwing manually the nut on the screw facing the center line of the roof. This will put in place the curtain over the whole length of the roof.



The curtain is then fixed along the trailer roof as shown in the following pictures.



When the **CARAPAX®** roof curtain is fixed on every roofstick, the first nut can be screwed firmly in place with an air-powered screwdriver. By doing this, the second screw on the clamp will come down so that it becomes easy to put the second nut on it. The second nut can immediately be screwed firmly in place. When this is done, the **CARAPAX®** roof curtain will already be quite tightly fit on the roof.



Then the side flaps can be brought down to the sides and fixed with a rivet on the roofsticks.



When the whole job is done, the **CARAPAX®** roof curtain sits very tight on the roof, so it can efficiently protect the roof structure.

